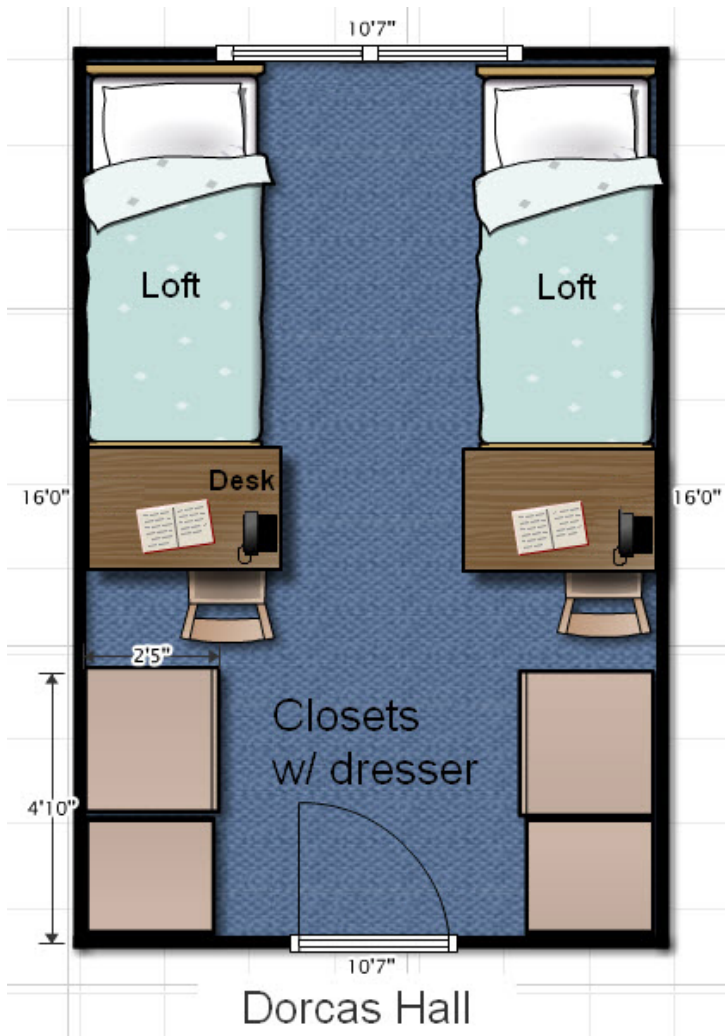


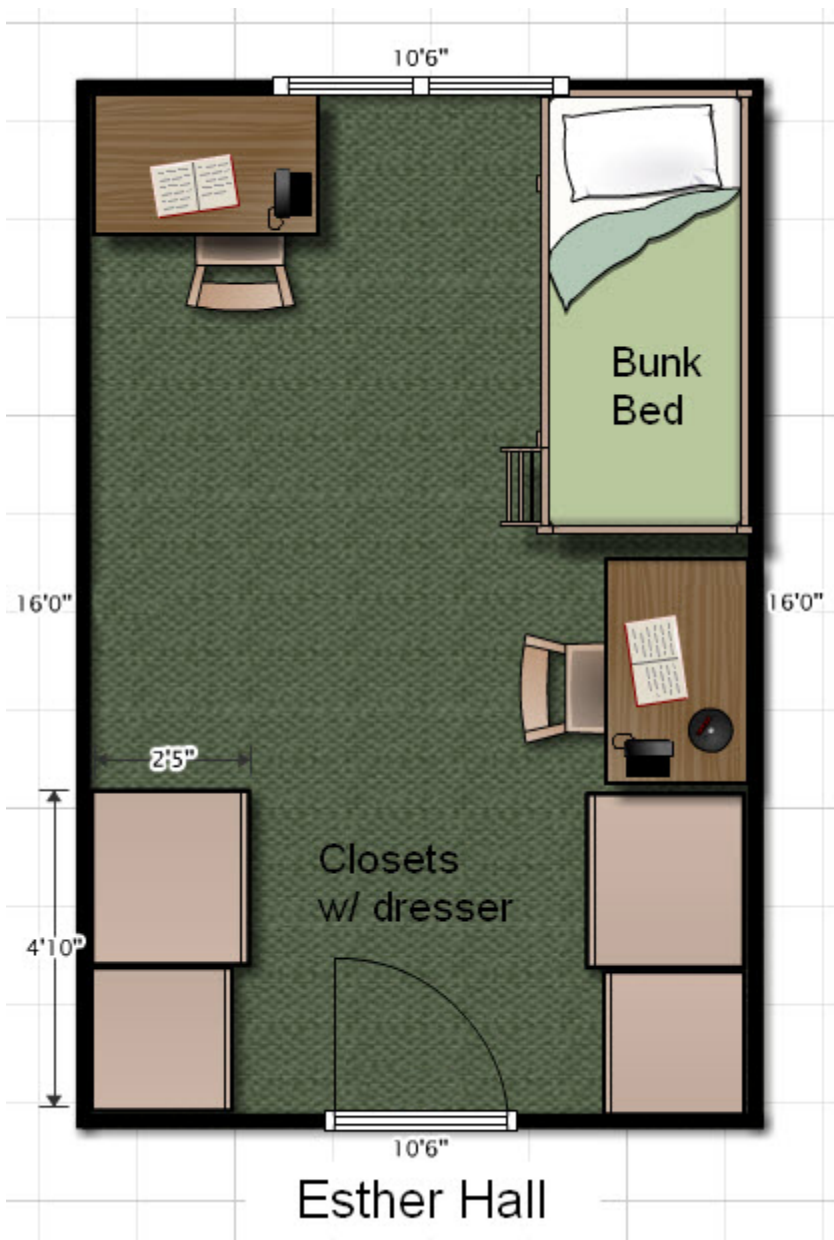
David Hall

- Number of students per room: 2
- Room dimensions: 17'6" x 12'
- Closet/storage space: One closet per student, 2'6" x 4'9", dresser, storage cabinet above closet
- Closet size: H-82" W-54" D-24"
- Upper storage: H- 21" W-54" D-24"
- Height under bed: 15" & 21" (beds can be lofted, without loft 15")
- Window height: 48"
- Window width: 56"
- Distance from floor to top of window: 87"
- Width of window sill: 60"
- Furniture: Desk, dresser, bed
- Showers: Three per floor
- Community space: Several lounges on all three floors
- Laundry/cooking facility: Laundry room and cooking facility in the basement
- Distance to dining hall: 350 steps
- Other: Female dorm, top and bottom floor are typically all freshmen. This dorm has air conditioning, refrigerators are not allowed. David also offers rooms that have an adjoining bathroom per two rooms.



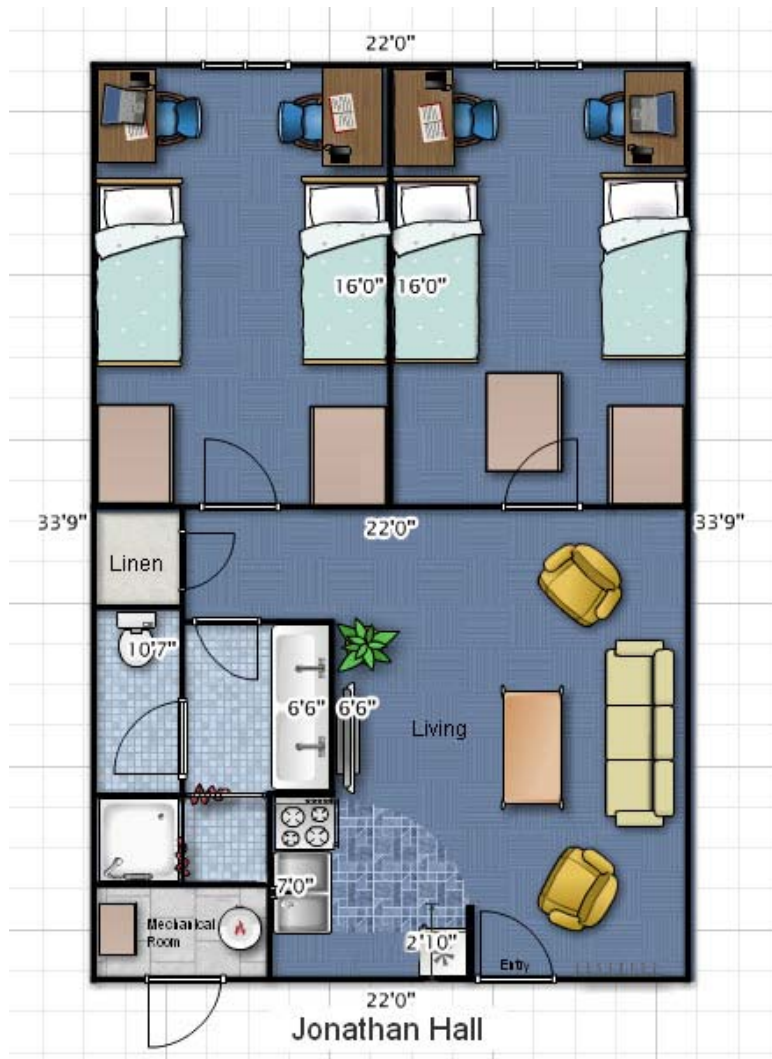
Dorcas Hall

- Number of students per room: 2-3
- Room dimensions: 16'2" x 10'7"
- Closet/storage space: Closets with dressers, desk
- Closet size: H-81" W-31" D-24"
- Upper storage: H- 15" W-55" D- 29 ½"
- Height under bed: lofted, 64"
- Window height: 50"
- Window width: 70"
- Distance from floor to top of window: 90"
- Width of window sill: 74"
- Furniture: Dresser, bed with loft
- Showers: Three per floor
- Community space: Lounges
- Laundry/Cooking facility: Full kitchen available in basement, laundry room located in Esther
- Distance to dining hall: 95 steps



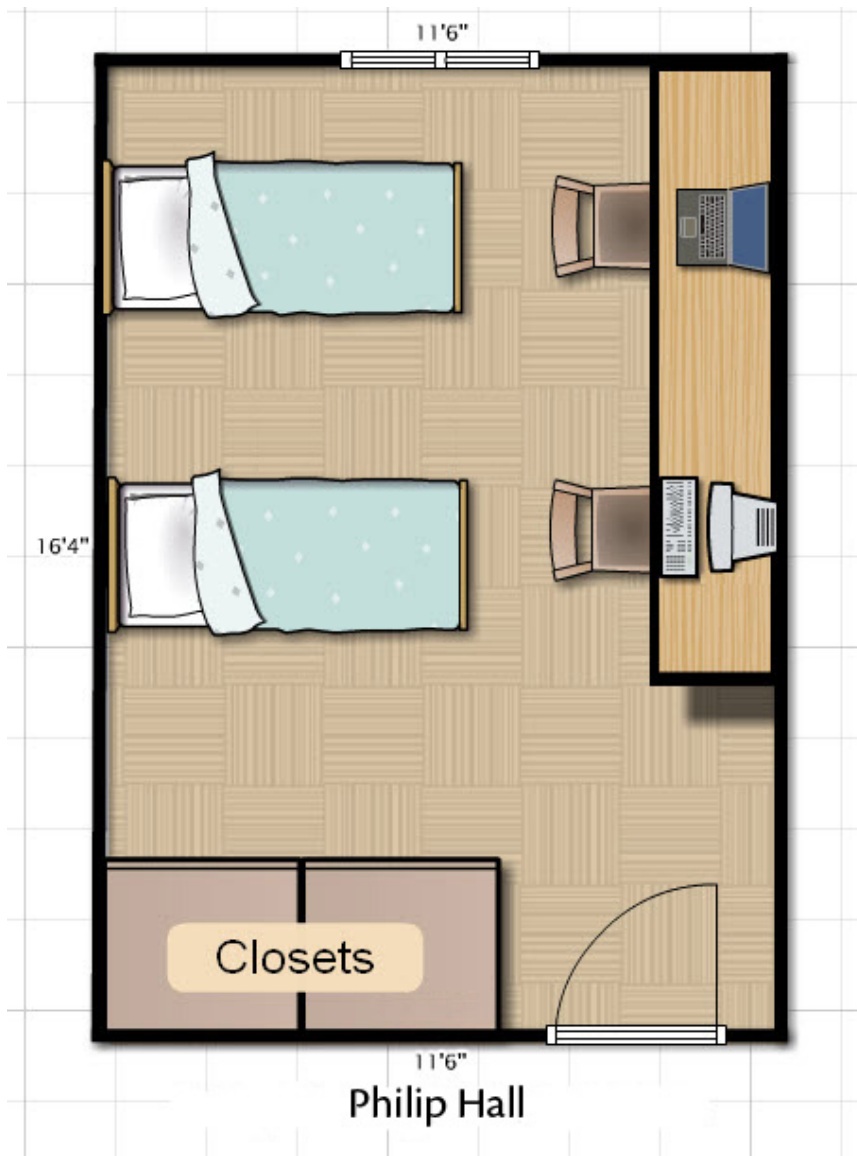
Esther Hall

- Number of students per room: 2-3
- Room dimensions: 16'2" x 10'6"
- Closet/storage space: Yes
- Closet size: H-81" W-32" D-24"
- Upper storage: H-15" W-55" D-29 1/2"
- Height under bed: lofted-63"
- Window height: 50"
- Window width: 70"
- Distance from floor to top of window: 90"
- Width of window sill: 73"
- Furniture: Bunk bed, closet with dresser, desk
- Showers: Three per floor
- Community space: Lounges
- Laundry/Cooking facility: Basement laundry room, basement lounge has kitchen available
- Distance to dining hall: 140 steps



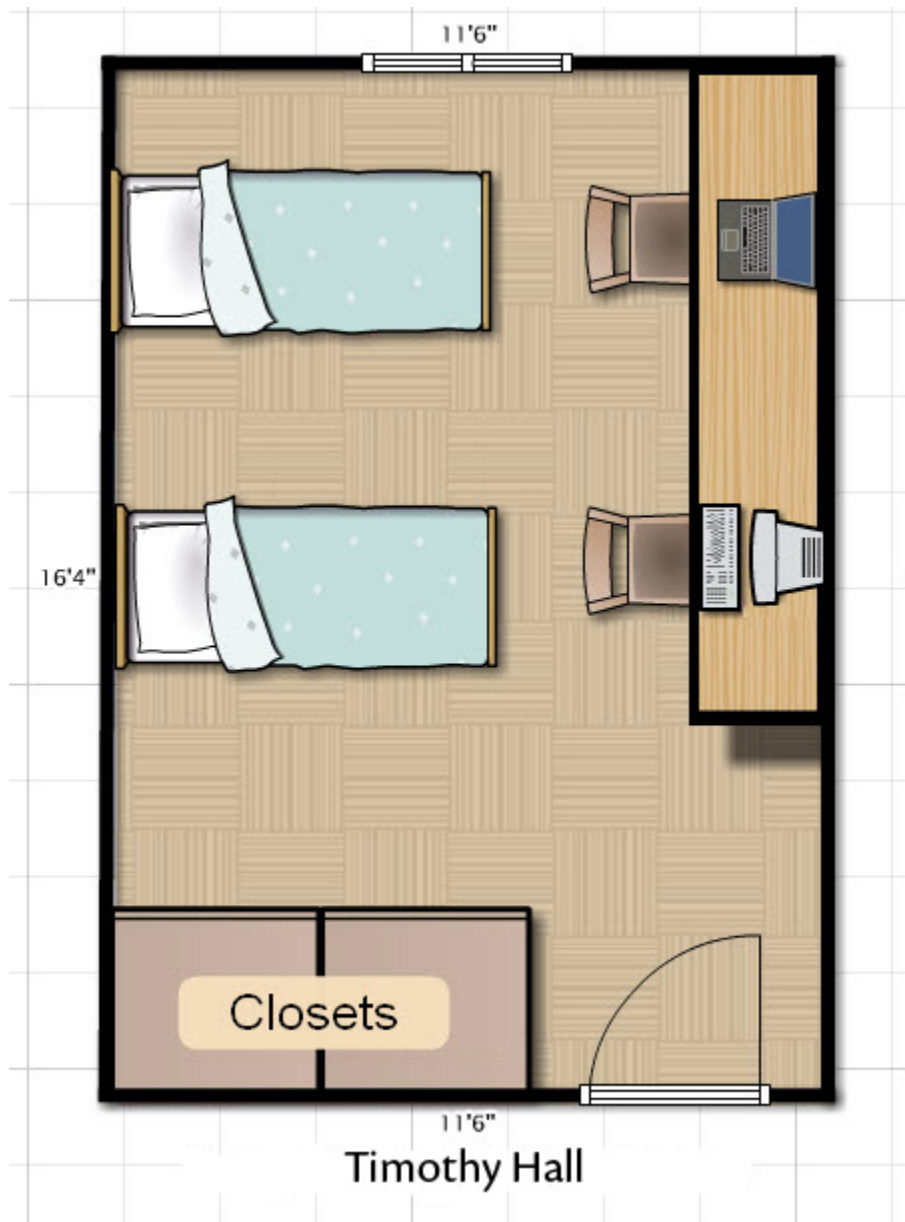
Jonathan Hall

- Number of floors/rooms: 4
- Number of students per room: 4
- Apartment dimensions: 33'9" x 22'
- Closet/storage space: Closets in each room, storage shelves in bathroom, kitchen cabinets
- Furniture: Bed, dresser, desk, couch, 2 chairs, refrigerator, stove, oven, sink, shower, table, bathroom
- Closet size: H- 78" W-29 ½" D-22"
- Upper storage: H-16 ½" W-60" D-26"
- Height under bed: 22" and 16"
- Window height: 60"
- Window width: 39"
- Distance from floor to top of window: 82"
- Width of window sill: 45"
- Showers: One shower per room
- Community space: Lounges on first three floors, vending machine and television on main floor
- Laundry/cooking facility: Cooking facility in each room, laundry room per floor
- Distance to dining hall: 210 steps
- Other: Apartment style living. Newest residence hall.



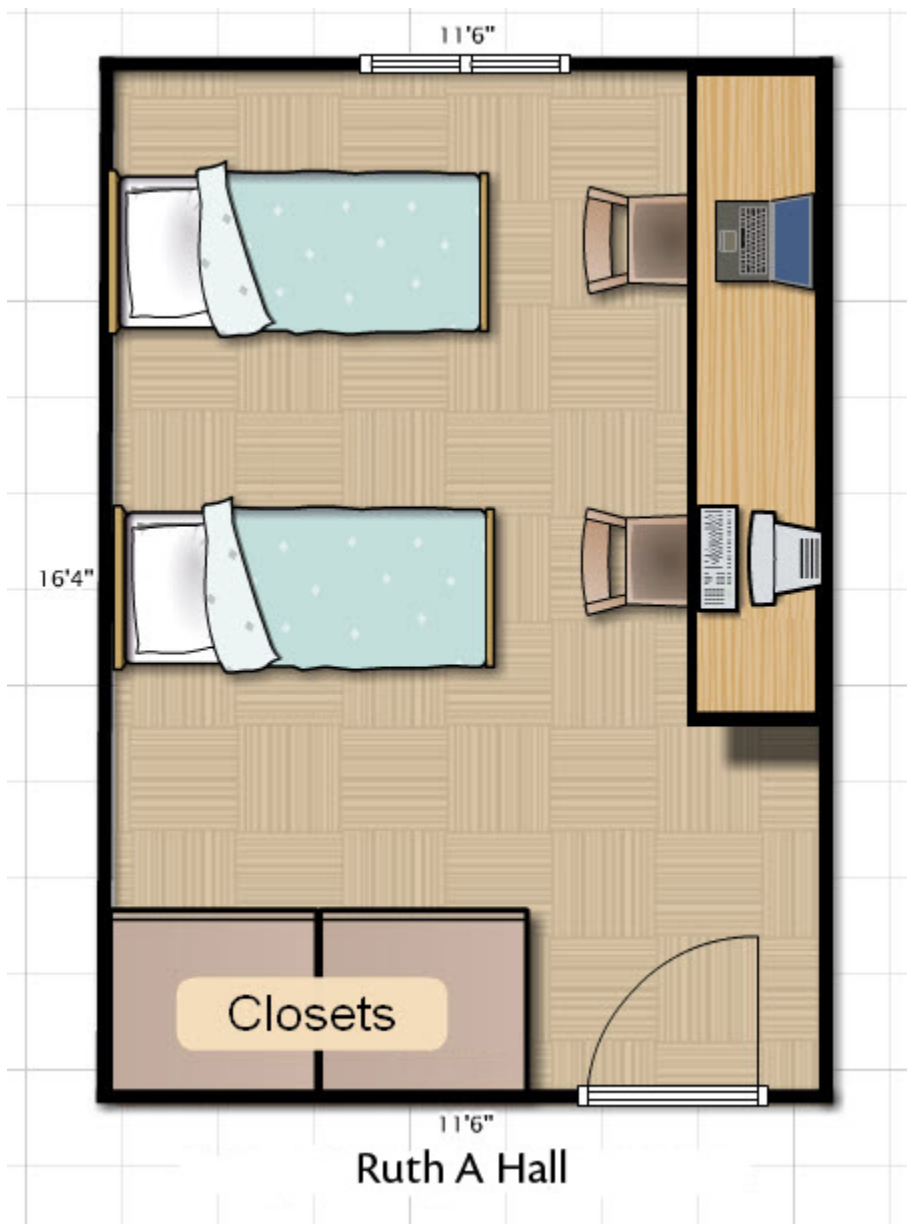
Philip Hall

- Number of students per room: 2
- Room dimensions: 16'4" x 11'6"
- Closet/storage space: Two closets per room
- Closet size: H- 82" W-43" D- 27"
- Upper storage: H-15" W-60" D- 29 ½"
- Height under bed: 19"
- Window height: 50"
- Window width: 62"
- Distance from floor to top of window: 87"
- Width of window sill: 72"
- Furniture: desk, dresser, bed
- Showers: Three per floor
- Community space: A lounge per floor with television and living room, only open to opposite sex during dorm hours
- Laundry/Cooking facility: Two per floor, kitchen has full size refrigerator and microwave
- Distance to dining hall: 220 steps



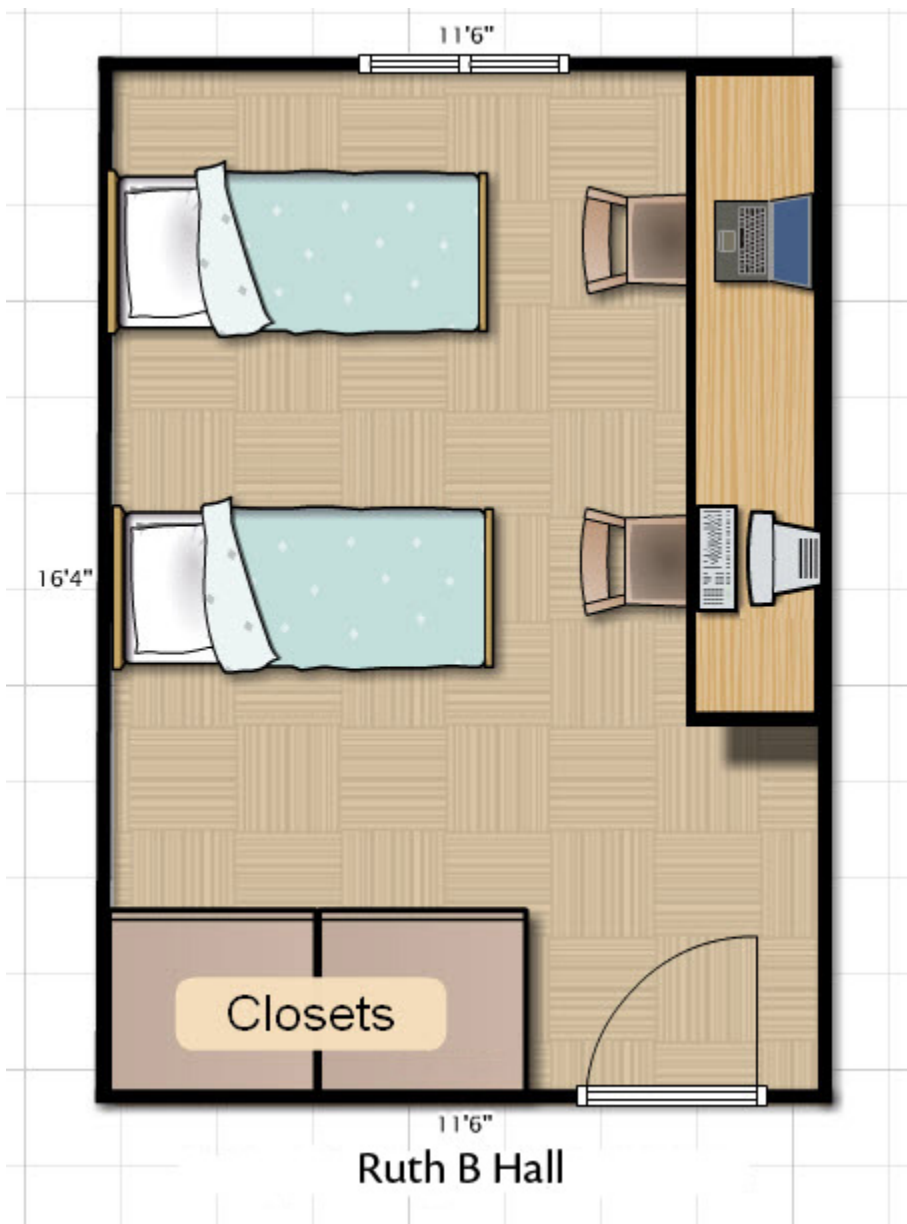
Timothy Hall

- Number of students per room: 2
- Room dimensions: 16'4" x 11'6"
- Closet/storage space: Two closets per room
- Closet size: H-82" W-51" D-27"
- Upper storage: H-10" W-51" D-12"
- Height under bed: 16" and 58"-bunk beds
- Window height: 50"
- Window width: 72"
- Distance from floor to top of window: 87"
- Width of window sill: 72"
- Furniture: Desk, dresser, bed
- Showers: Three per floor
- Community space: A lounge per floor with television and living room, only open to opposite sex during dorm hours
- Laundry/Cooking facility: Two per floor, kitchen has full size refrigerator and microwave
- Distance to dining hall: 260 steps



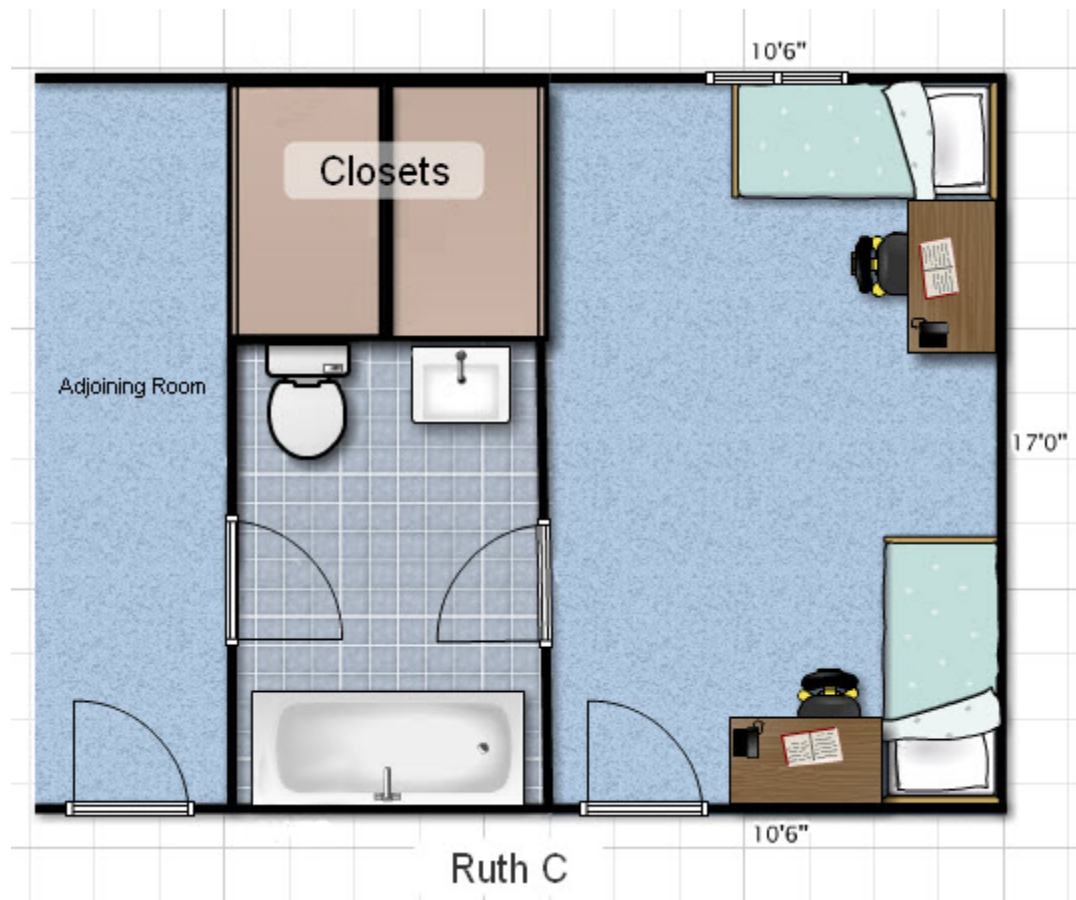
Ruth A Hall

- Number of students per room: 2
- Room dimensions: 16'4" x 11'6"
- Closet/storage space: Two closets per room
- Closet size: H- 82" W- 47" D-27"
- Upper storage: W-60" D-27"
- Height under bed: 15" without loft
- Window height: 50"
- Window width: 56"
- Distance from floor to top of window: 89"
- Width of window sill: 74"
- Furniture: Desk, dresser, bed
- Showers: Three per floor
- Community space: Lounges with television and vending
- Laundry/cooking facility: Basement laundry room, small stove and refrigerator on ground level
- Distance to dining hall: 145 steps



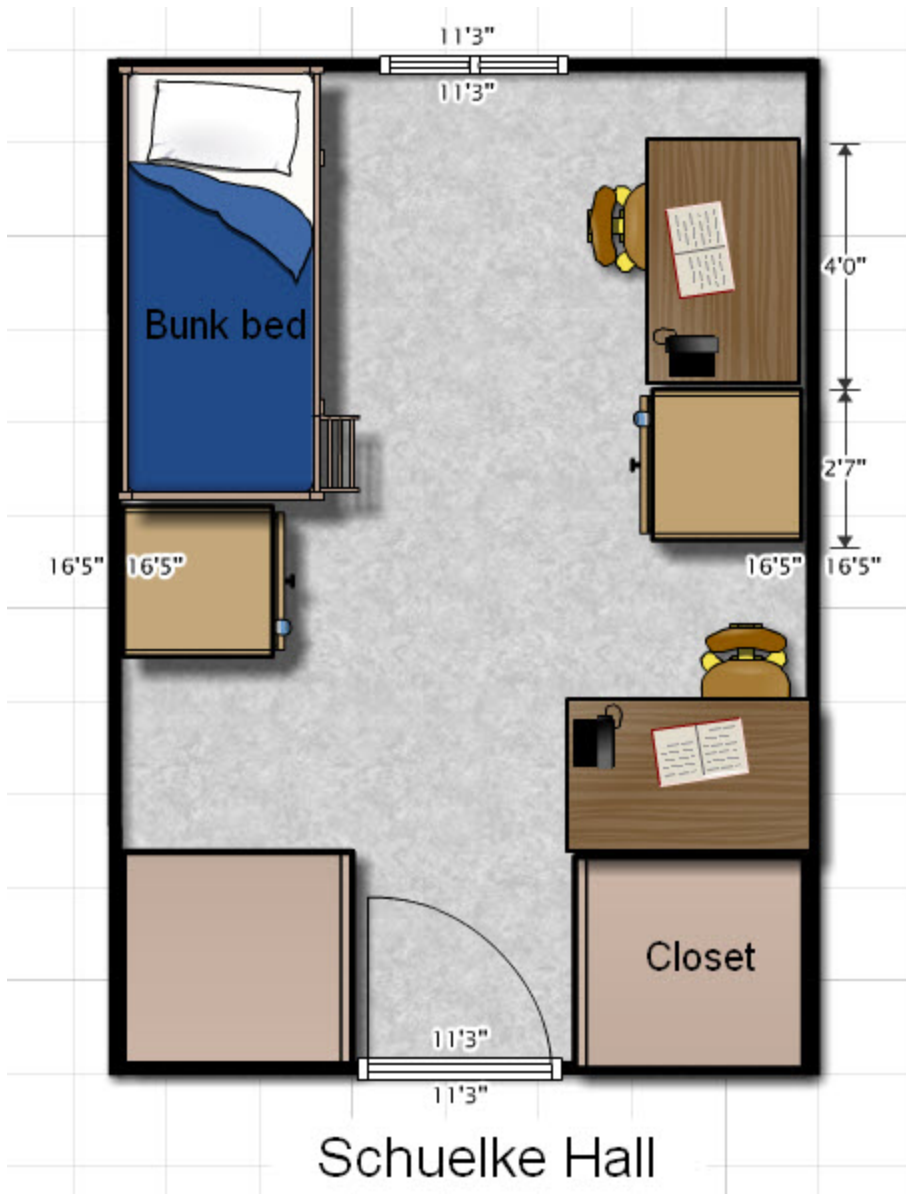
Ruth B Hall

- Number of students per room: 2
- Room dimensions: 16'4" x 11'6"
- Closet/storage space: Two closets per room
- Closet size: H-66" W-34" D-24"
- Upper storage: H-13" W-34" D-24"
- Height under bed: 15" without loft
- Window height: 50"
- Window width: 56"
- Distance from floor to top of window: 87"
- Width of window sill: 74"
- Furniture: Desk, dresser, bed
- Showers: Three per floor
- Community space: Lounges with television and vending
- Laundry/cooking facility: Basement laundry room, small stove and refrigerator on ground level
- Distance to dining hall: 165 steps



Ruth C Hall

- Number of students per room: 2 (2-room suites)
- Room dimensions: 17' x 10'6"
- Closet/storage space: closets with dressers
- Closet size: H-102" W- 52" D-24"
- Upper storage: H-17" W-52" D-24"
- Height under bed: 15" without loft
- Window height: 50"
- Window width: 56"
- Distance from floor to top of window: 85"
- Width of window sill: 62"
- Furniture: Desk, dresser, bed
- Showers: One adjoining bathroom per 2 rooms with a shower
- Community space: Lounges with television
- Laundry/cooking facility: Basement laundry room, full size kitchen in basement
- Distance to dining hall: 195 steps



Schuelke Hall

- Number of students per room: 2
- Room dimensions: 16'5" x 11'3"
- Closet/storage space: Yes
- Closet size: H-102" W-36" D-48"
- Upper storage: H-42" W-36" D-34"
- Height under bed: lower bunk- 19, upper bunk- 58"
- Window height: 67"
- Window width: 51"
- Distance from floor to top of window: 93"
- Width of window sill: 43"
- Furniture: Desk, dresser, bed
- Showers: Three per floor
- Community space: Lounge with large screen television
- Laundry/cooking facility: Basement laundry room, full size refrigerator available
- Distance to dining hall: 270 steps



Strieter Hall

Strieter Hall

- Number of students per room: 2
- Room dimensions: 15'4" x 10'11"
- Closet/storage space: Yes
- Closet size: H-102" W-30" D-43"
- Upper storage: 42" W-30" D-43"
- Height under bed: 10"; lofted 63"
- Window height: 60"
- Window width: 42"
- Distance from floor to top of window: 90"
- Width of window sill: 52"
- Furniture: Desk, dresser, bed
- Showers: Three per floor
- Community space: Lounge with large screen television and ping-pong table
- Laundry/cooking facility: Basement laundry room
- Distance to dining hall: 275 steps